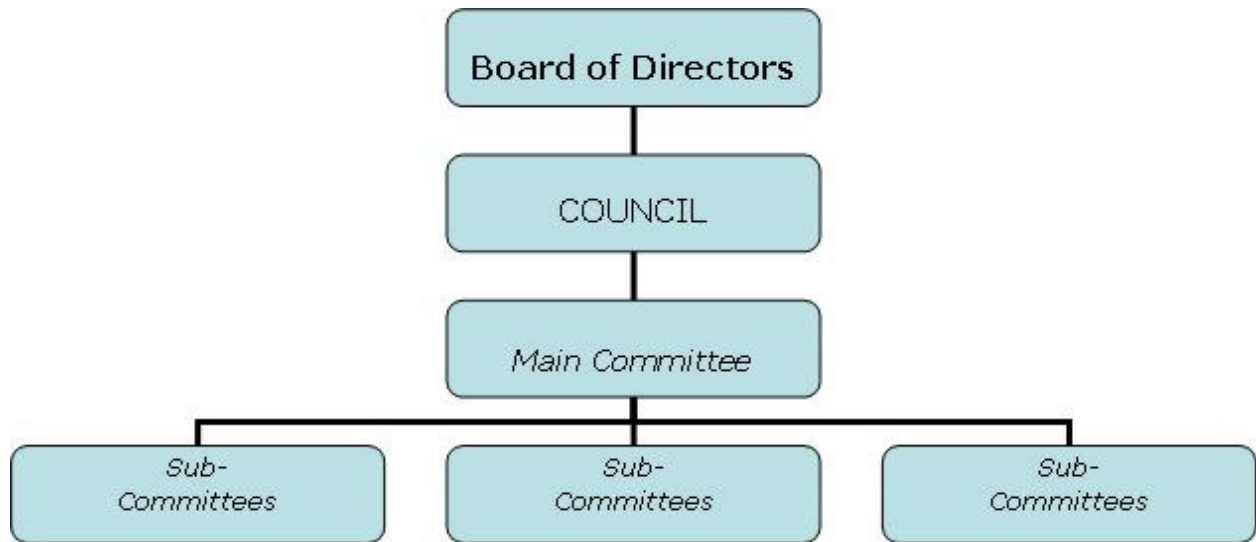


MVBCN Committee List

"Familiar" Name	Proper Name	Type of Committee	Matters for Which This Committee is Responsible
Council	Regional Advisory Council	Main	Carries major responsibility for planning, development and oversight of the regional service delivery system.
<i>FMG or "Fiscal Management"</i>	<i>Fiscal Management Group</i>	<i>Sub-com of Council</i>	<i>Prepares recommendations to Council on matters that involve financial issues.</i>
<i>Acute Care Council</i>	<i>Mid-Willamette Valley Acute Care Region Council (7 County Council)</i>	<i>Advisory to Council</i>	<i>Evaluates inpatient services and alternatives for MVBCN and Accountable Behavioral Health Alliance (ABHA) for indigent funds.</i>
<i>EAST Strategic Partners</i>	<i>EAST Oversight Group</i>	<i>Reports to Council</i>	<i>Provides consultation for the implementation of the Early Assessment and Support Team (early psychosis project, services and support) and includes statewide dissemination and EDIPPP.</i>
QMC	Quality Management Committee	Main	Develops policies for recommendation to Council regarding service improvement. Monitors agency performance across the region. Develops an annual training schedule for the region. Oversees quality management activities of all agencies in the region.
<i>Critical Incidents Committee</i>	<i>Critical Incident Review Subcommittee</i>	<i>Sub-com of QMC</i>	<i>Reviews reports from member agencies regarding the harm, injury or death of an OHP member, in order to identify system issues for improvement. Reviews the agency's review of the incident. Reports findings to QMC.</i>
<i>Y&F or "Youth & Family"</i>	<i>Youth & Family Work Group</i>	<i>Sub-com of QMC</i>	<i>Coordinates planning for youth and family programs with program managers of the BCN's Youth and Family programs.</i>
<i>TSP Oversight</i>	<i>Trauma Survivors Administrative Oversight Team</i>	<i>Sub-com of QMC</i>	<i>Oversees the implementation of recommendations for improved and alternative services for clients who also use crisis and hospital services frequently and who also have a trauma history.</i>
ATOD	ATOD Directors	Main	Provides a forum to discuss issues common to directors of chemical dependency treatment programs. Reports issues to Council.
Membership Committee	Membership Committee	Main	Reviews current and potential BCN member agencies for their compliance with performance standards on a bi-annual basis. Reports findings to Council.
Prevention Group	Prevention Planning Work Group	Main	Selects target problems and evidence-based interventions to prevent the development of mental health problems; recommends prevention funding to Council for approval.
CAMC (kam-ik)	Consumer Affairs Management Committee	Main	Provides leadership and develops policy recommendations to Council on matters related to consumer affairs in the region. Makes funding recommendations for activities promoting self-help and empowerment, includes reviewing grant applications for self-help projects and consumer-run Drop-in Centers and selecting scholarship recipients for training or conferences.
CAT	Consumer Advocates Team	Main	Provides a forum for Consumer Advocates appointed to MVBCN committees to gather, strengthen confidence, increase effectiveness as advocates, and provide feedback to the Network on issues affecting consumers/advocacy.

Regional Partners Executive Committee	Regional Partners Executive Committee for Children and Youth	Main	Provides youth, family and multi-agency leadership for the children's mental health service system to develop a family-driven continuum of care for children with serious emotional disorders, and implement the Oregon Children's System Change Initiative within the BCN. Also oversees Mid-Valley WRAP
Integration Group	Mental Health/Chemical Dependency/Physical Health Integration Group	Main	Oversees BCN efforts to improve services to clients who experience both mental health and chemical dependency disorders and addresses health and wellness for everyone we serve.

The Flow of Decisions



Council reports to the Board of Directors.

Main Committees report to Council.

Sub-committees complete most of the work or tasks and report back to main committees. (Some projects are also monitored on the Annual Quality Plan through QMC.)