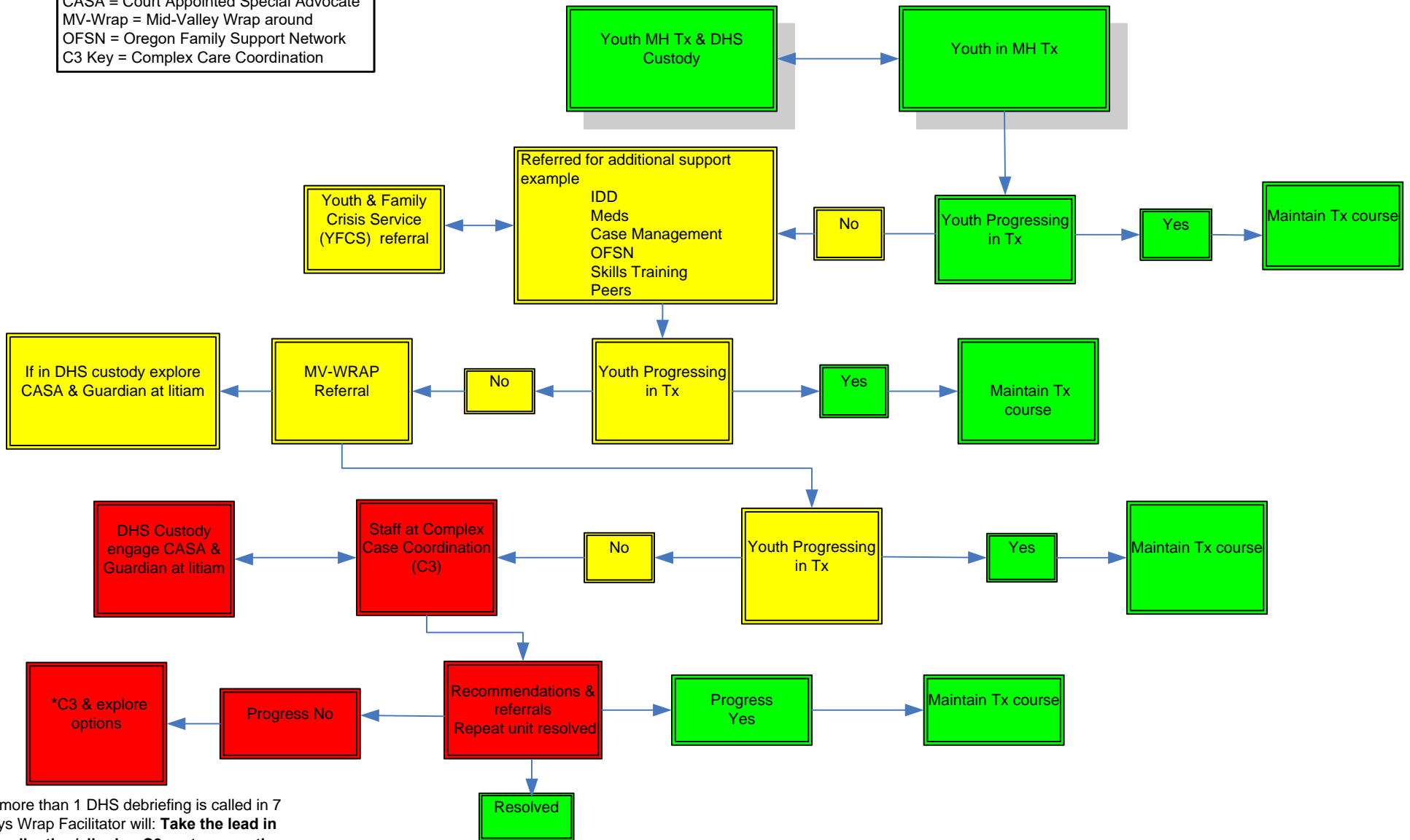


Mental Health Outpatient Guidelines for Youth

Standard Care
 Moving to Complexity
 Complex

Tx = Treatment
 MH = Mental Health
 DHS = Depart of Human Services
 CASA = Court Appointed Special Advocate
 MV-Wrap = Mid-Valley Wrap around
 OFSN = Oregon Family Support Network
 C3 Key = Complex Care Coordination



*If more than 1 DHS debriefing is called in 7 days Wrap Facilitator will: **Take the lead in coordinating/aligning C3 partner meetings.**

